

AIRMASS

- Used tools :
- MSG Data Manager PRO
- Geosatsignal 7

# SETTING MDM

- MSG Data Manager PRO
- GO SETUP - ADVANCED SETUP
- CHANNEL 5 - SET MIN : 20 MAX : 1023
- CHANNEL 6 - SET MIN : 30 MAX : 696
- CLICK - OK

# CHANNEL 5

## MSG Data Manager - Advanced Setup

11	12	GOES-W vis	GOES-W mid-ir	GOES-W ir	GOES-W wv	GOES-E Vis			
GOES-E mid-ir	GOES-E ir	GOES-E wv	MTSAT vis	MTSAT mid-ir	MTSAT ir	MTSAT wv	Met5 vis	Met5 ir	
Met5 wv	Met7 vis	Met7 ir	Met7 wv	FY ir1	FY ir2	FY ir3	FY ir4	FY vis	FY vis 1km
1	2	3	4	5	6	7	8	9	10

### Channel 5 - WV 6.2 $\mu$ m - transfer settings

Min

Max

Gamma

Save as

Job

Save with overlay

City list

Marker list

Calibrate thermal

Save raw count

Default image with raw

### Centre HRV window

Upper

Lower

Centred on

### Image save options

JPEG save quality

Vis    IR

Resize

Save full HRV

Use N HRV

Extra raw PGM info

### Copyright

Location

Date & time

Use local time

### Cartography

Country boundary data file

Bold city markers

### Satellite

Delete other

# CHANNEL 6

## MSG Data Manager - Advanced Setup

11	12	GOES-W vis	GOES-W mid-ir	GOES-W ir	GOES-W wv	GOES-E Vis			
GOES-E mid-ir	GOES-E ir	GOES-E wv	MTSAT vis	MTSAT mid-ir	MTSAT ir	MTSAT wv	Met5 vis	Met5 ir	
Met5 wv	Met7 vis	Met7 ir	Met7 wv	FY ir1	FY ir2	FY ir3	FY ir4	FY vis	FY vis 1km
1	2	3	4	5	6	7	8	9	10

### Channel 6 - WV 7.3 $\mu$ m - transfer settings

Min

Max

Gamma

Save as

Job

Save with overlay

City list

Marker list

Calibrate thermal

Save raw count

Default image with raw

### Centre HRV window

Upper

Lower

Centred on

### Image save options

JPEG save quality

Vis    IR

Resize

Save full HRV

Use N HRV

Extra raw PGM info

### Copyright

Location

Date & time

Use local time

### Cartography

Country boundary data file

Bold city markers

### Satellite

Delete other

# SETTING GEOSAT SIGNAL 7

- GEOSAT SIGNAL 7:
- GO JOB – SETUP :
- SET RGB CHANNELS 5-6 8-9 0-5
- SET OFFSET :                      SET GAIN :
- RED : 70                              RED : 295
- GREEN : 83                            GREEN : 275
- BLUE : -130                            BLUE : 240

# GEOSAT SIGNAL 7

Job 17 - Airmass - setup

Processing Remapping Animation Annotation General

False colour

Thermal FC

Fire

Brightness adjust

None

Stretch

Histo equalise

Crispen

None

Crispen

More

RGB settings

Red

Negative  Negative  Negative

Subtract

Offset

Gain %

RGB xfer

Full height HRV

CLUT   Space is white

Vis ch.   Space is white

City   Bold

Output format

Save world file

Sea threshold

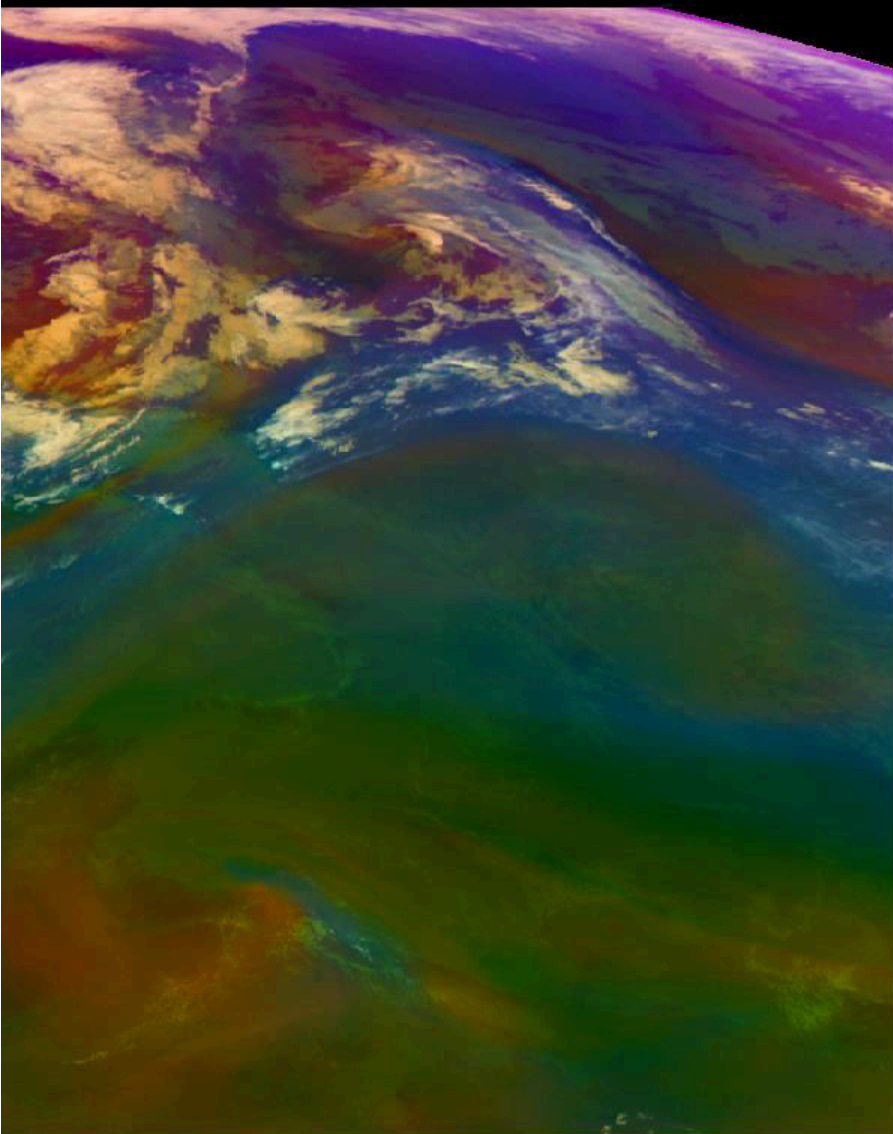
Reset OK Cancel

# COMPARISON

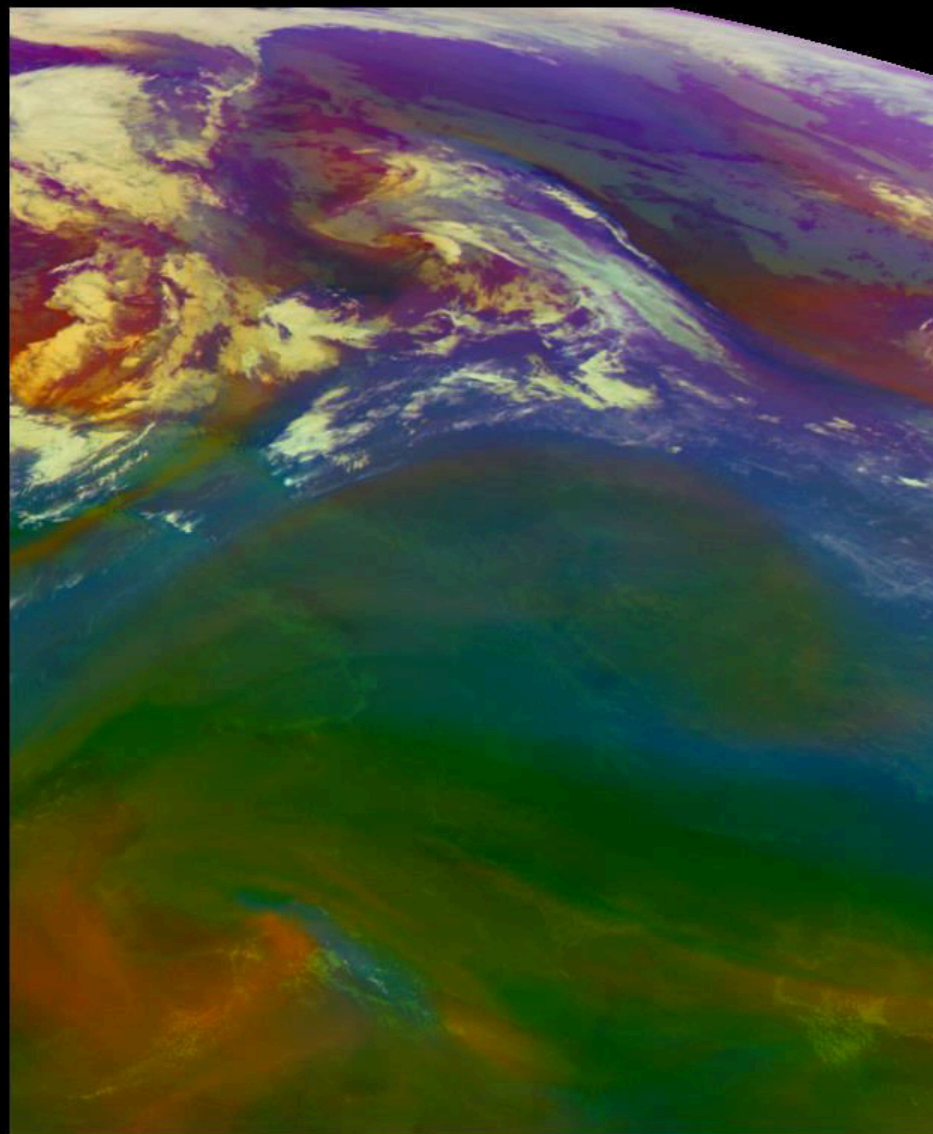
new setting have include lighter  
orange color



*EUMETSAT colors*

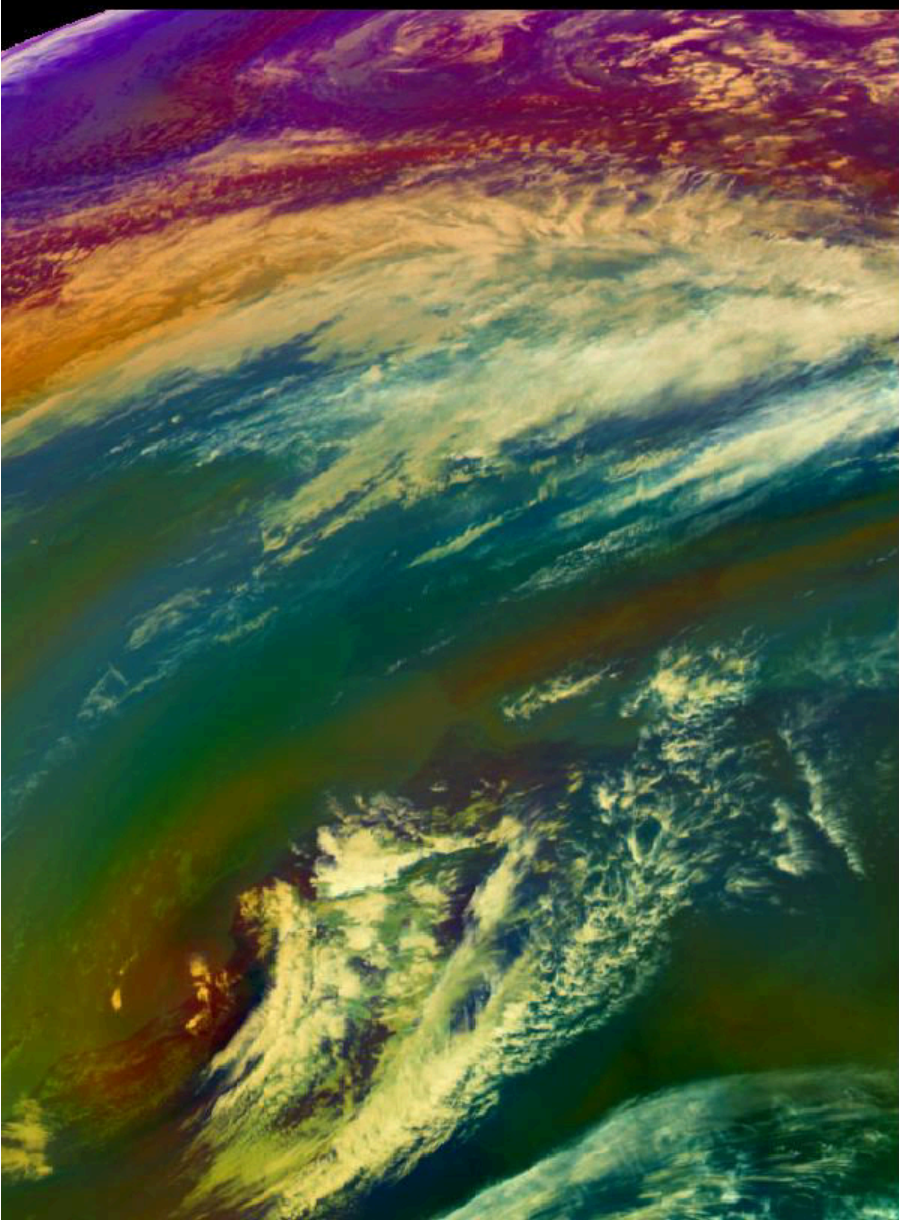


*GEOSAT SIGNAL 7 colors*

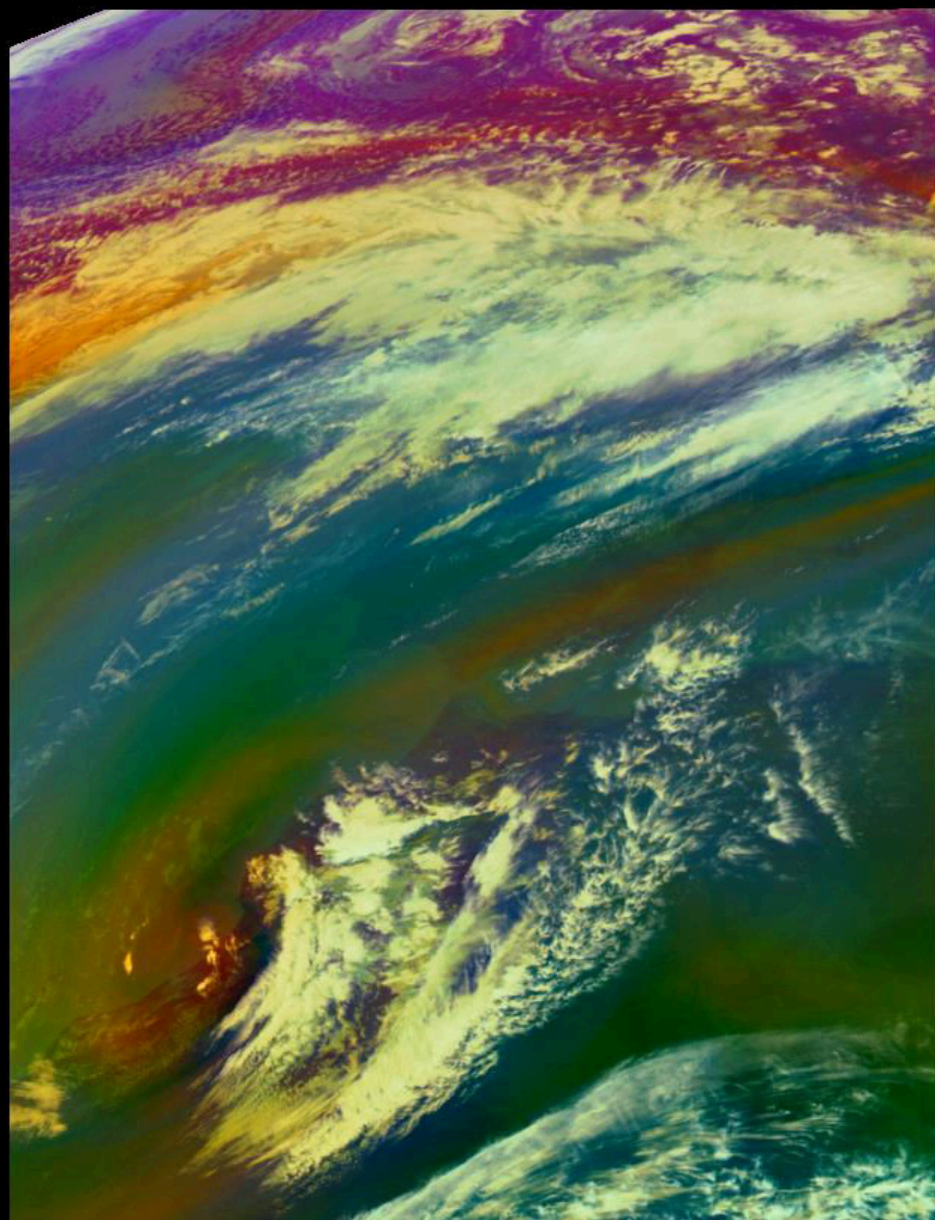




*EUMETSAT colors*

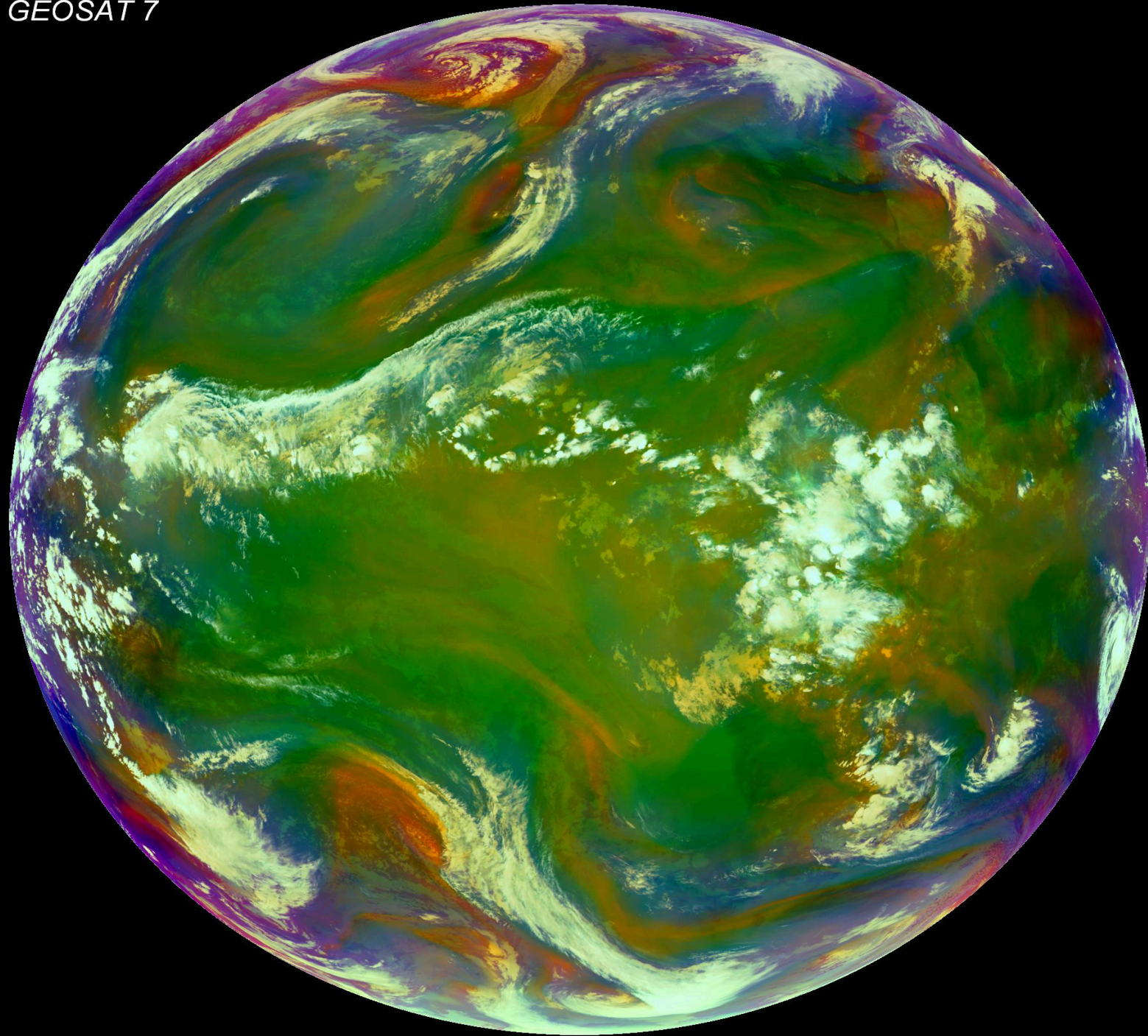


*GEOSAT SIGNAL 7 colors*



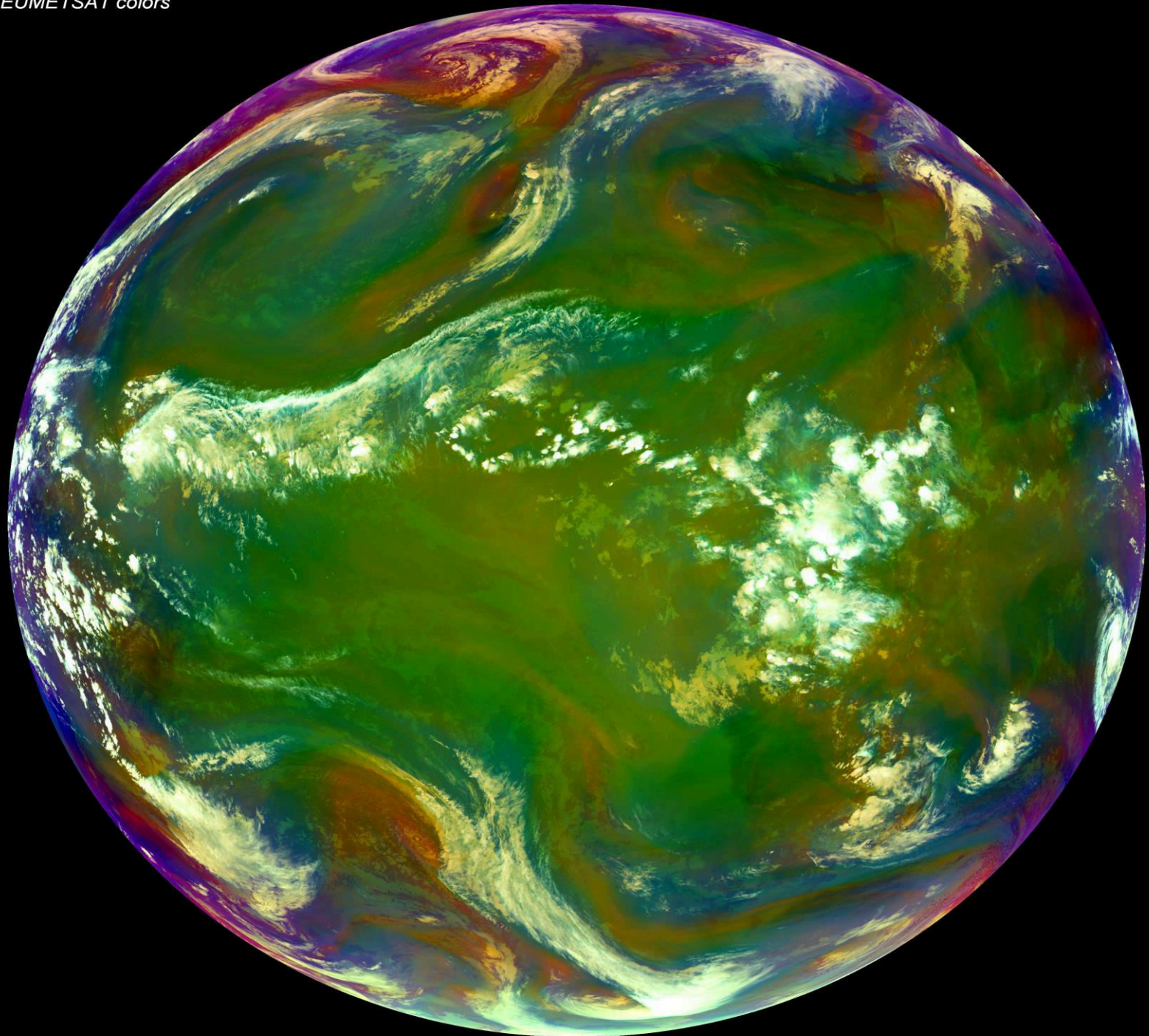


GEOSAT 7





*EUMETSAT colors*

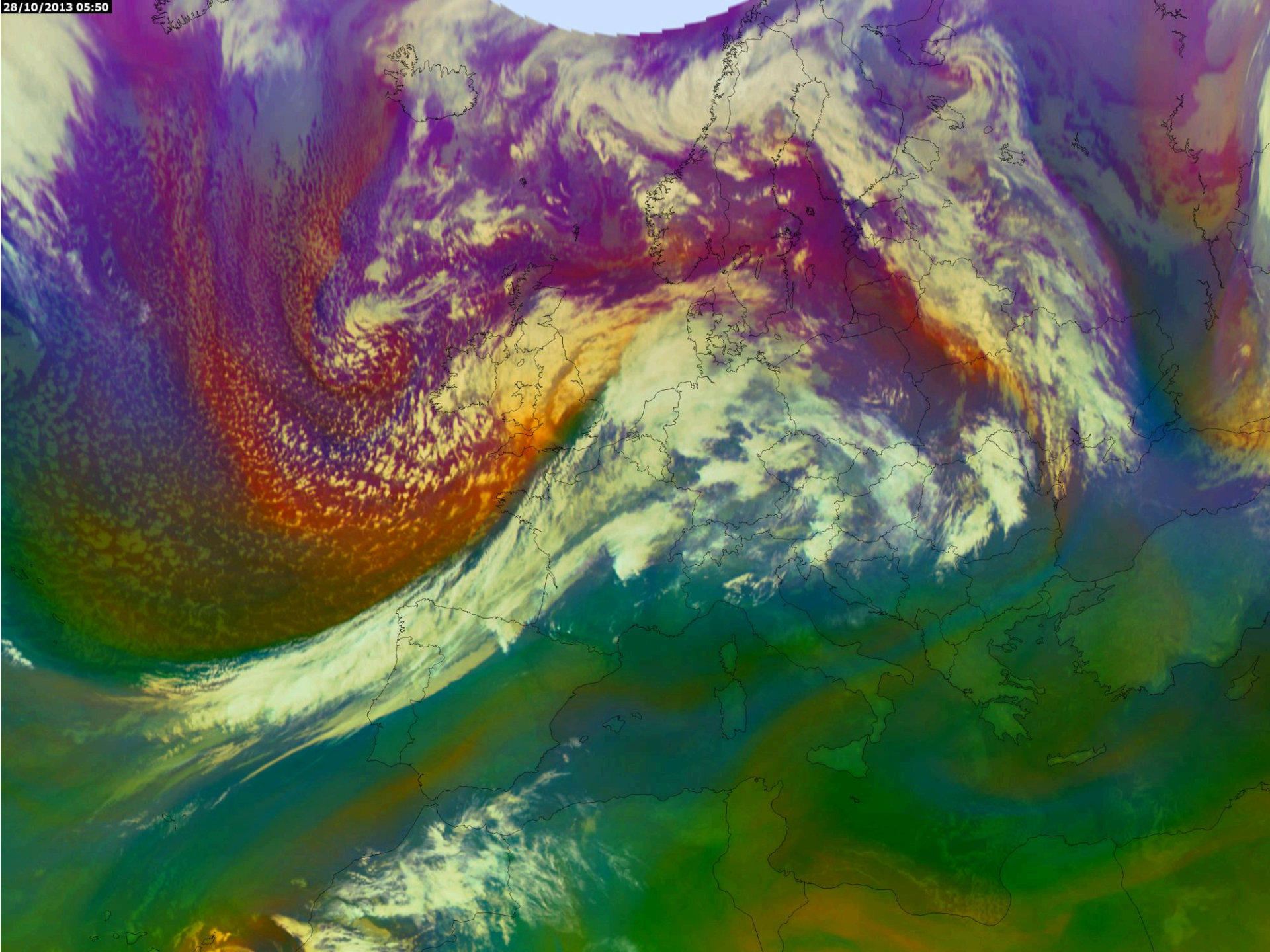


IMAGE

10-bit



28/10/2013 05:50



END